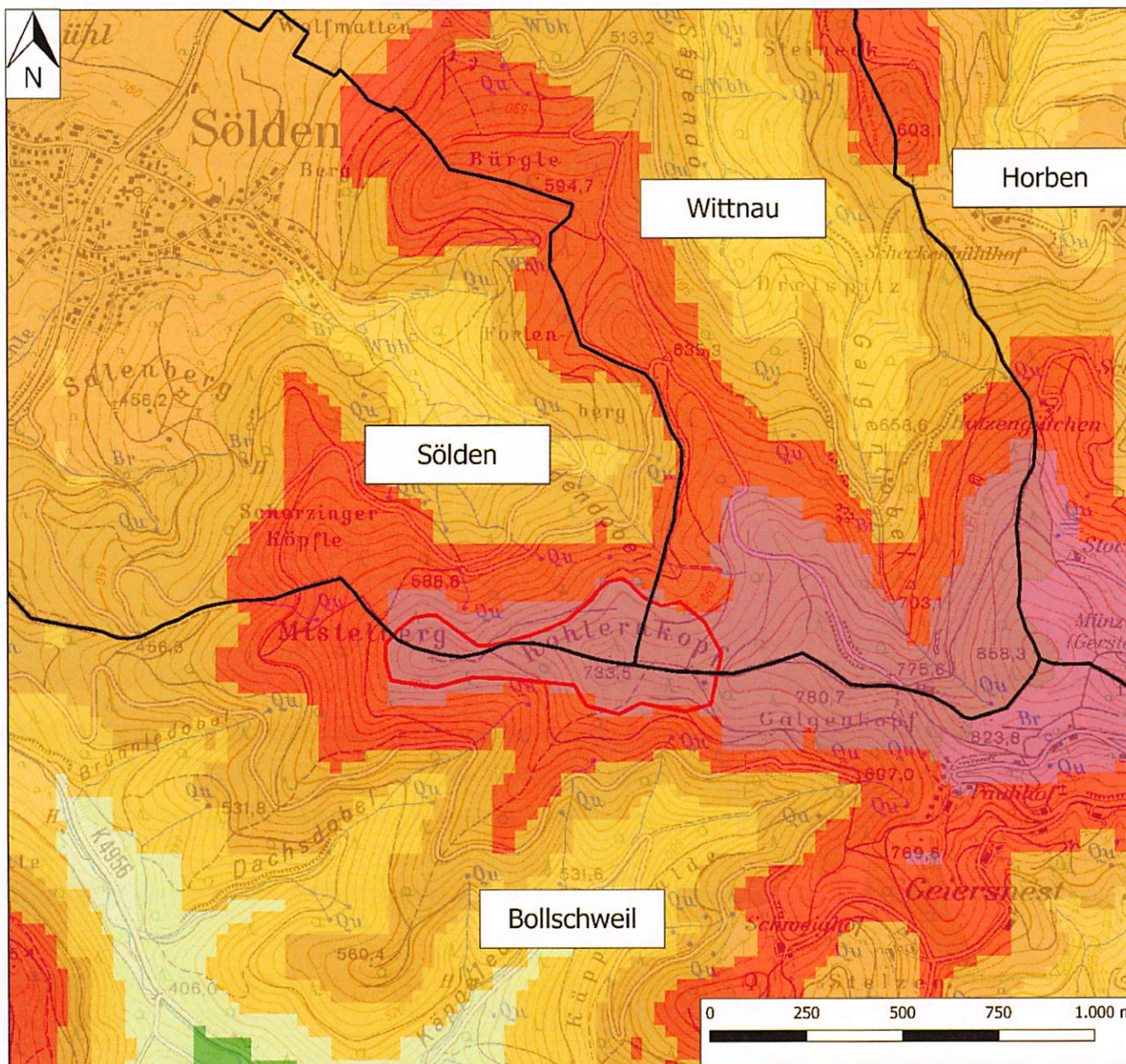




# Projekt Kohlernkopf Windverhältnisse



## Legende

- Gemeindegrenzen
  - Potenzialfläche Windenergie
- 160m-Windleistungsdichte
- ≤ 75,000
  - 75,000 - 105,000
  - 105,000 - 145,000
  - 145,000 - 190,000
  - 190,000 - 250,000
  - 250,000 - 310,000
  - 310,000 - 375,000
  - 375,000 - 515,000
  - 515,000 - 660,000
  - 660,000 - 1600,000